

Tamco



**Coil Feeding
Solutions**

in Technical Tie up with



COMPACT DECOILING & STRAIGHTNER CUM FEEDER LINE

MODEL : CDSF 6 - 800



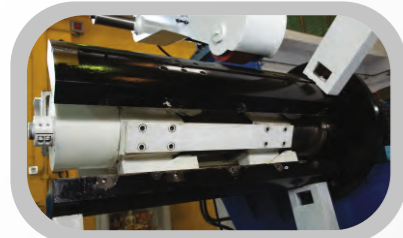
COMPACT DECOILING & STRAIGHTNER CUM FEEDER LINE

FEATURES

- Wedges type Decoiler with Hydraulic Jaw Expansion.
- Motorised Hold Down.
- Hydraulic Snubber with Drive.
- Peeler.
- Loop Control System.
- Opeanable Straightener cum Feeder.
- Straightener with Adjustable Backups.
- Pilot Release Arrangement.
- Entry Width Guide.
- Pre Pinch Station.
- Imported Atlanta Germany Gearbox (<5' backlash).
- Hydraulic Power Pack.
- Main Control Panel.
- Operating Panel.

OPTIONAL ATTACHMENTS

- Coil Loader.
- Traverse Winding
- Dynamic Straightening.
- Automatic Height Adjustment.
- Measuring wheel.
- Press Attachment.



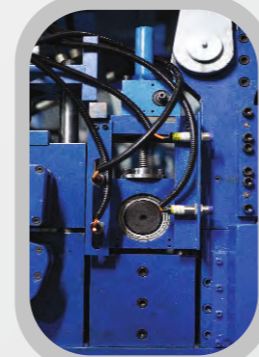
Wedge Type Mandrel Uncoiler



Disc Break With Compact Cylinder



Motorised Holddown



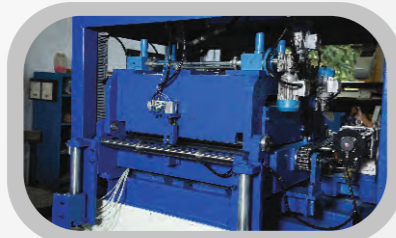
Pre Pinch Station



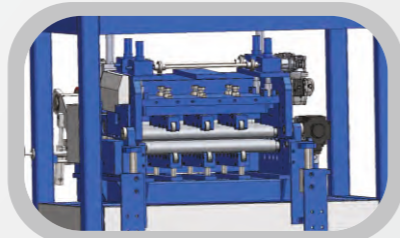
Coil Loader



Snubber Peeler



Rigid Straightener Cum Feeder



Backup Rollers



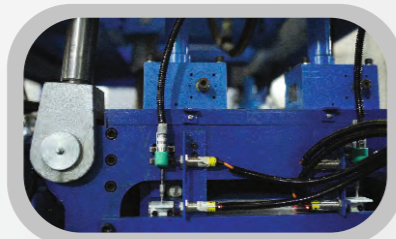
Hydraulic Power Pack



Measuring Wheel



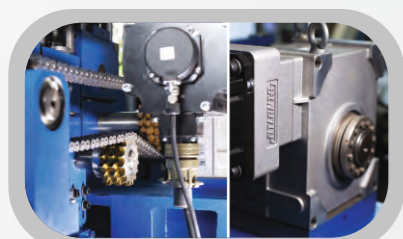
Pilot Release Arrangement



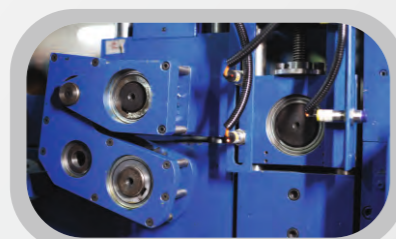
Dynamic Straightening (i.e. Motorised Adjustment and Programmable Rollers Rectifiers)



Roll Feeder with Entry Width Guide



Atlanta Gearbox with Drive



TDC Arrangement



Operating Panel



Control Panel



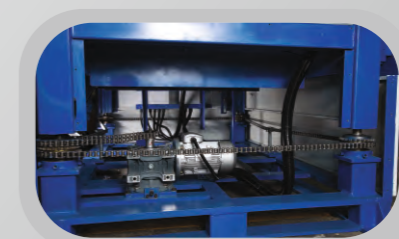
Traverse Winding

SPECIFICATIONS

MODEL	CDSF 6 - 800	CDSF 10 - 1300
Coil Width	70 - 800mm	100 - 1300mm
Coil Weight	Max. 6 Tones	Max. 10 Tones
Stock Thickness *	0.8 ~ 9.0 mm	0.8 ~ 6.0 mm
No. of work Rollers	Upper - 4 nos	
	Lower - 5 nos	
Back up Rollers *	Top - upto 3 rows	Top - upto 5 rows
	Bottom - upto 3 rows	Bottom - upto 5 rows
Jaw Expansion	456 ~ 568 mm	470 ~ 520 mm
Coil OD	1500mm	
SPM	Max. 70	
Pass Line Height	1280 ~ 1500 mm	
Servo Feed Motor *	7/11/15/22 Kw	11/ 15/22 Kw
Uncoiler Motor	5 HP	7.5 HP

Technical specifications are indicative and subject to change to suit end application.

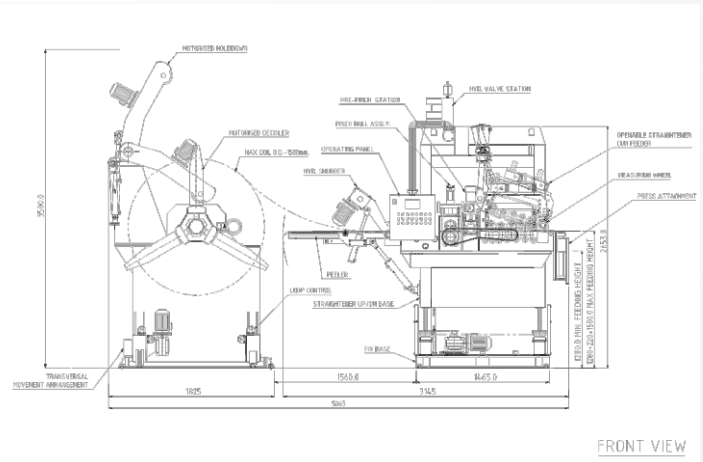
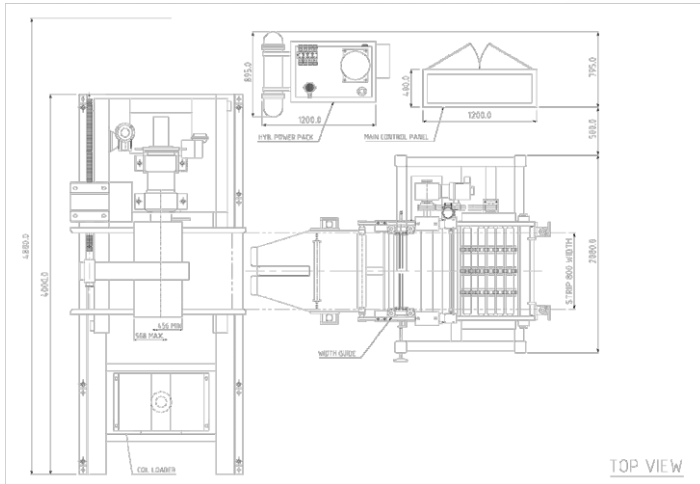
* Thickness capacity is dependent on backup rollers combination offered along with Servo Feed Motor capacity.



Auto Height Adjustment



Press Clamping Plate



STRAIGHTENING PERFORMANCE

Note: Figures in parenthesis are for feeding only without straightening.

Width (mm)	Yield Stress: N/mm															
	214	245	276	306	337	368	398	429	459	490	521	551	582	613		
	<i>Tensile Strength: N/mm² (For Reference Only)</i>															
	343	392	441	490	539	588	637	686	735	784	833	882	931	980		
Stock Thickness (mm)	0.8	800	800	(800)	(800)	(800)	(800)	(800)	(800)	(800)	(800)	(800)	(800)	(800)	(800)	
	1.0	800	800	800	800	(800)	(800)	(800)	(800)	(800)	(800)	(800)	(800)	(800)	(800)	
	1.2	800	800	800	800	800	800	800	(800)	(800)	(800)	(800)	(800)	(800)	(800)	
	1.6	800	800	800	800	800	800	800	800	800	800	800	800	(800)	(800)	
	2.3	800	800	800	800	800	800	800	800	800	800	800	716	643	580	526
	2.8	800	800	800	800	800	800	800	800	800	731	648	579	520	470	426
	3.2	800	800	800	800	800	800	800	716	631	560	500	449	406	369	
	4.0	800	800	800	800	736	675	623	556	491	436	390	351	318	289	
	4.5	800	800	711	640	582	533	492	457	427	381	342	308	278	253	
	5.0	741	648	576	518	471	432	399	370	346	324	303	273	247	225	
	6.0	514	450	400	360	327	300	277	257	240	225	212	200	189	180	
	7.0	378	331	294	265	240	220	203	189	176	165	156	147	139	132	
8.0	289	253	225	203	184	169	156	145	135	127	119	113	107	101		
8.5	256	224	199	179	163	150	138	128	120	112	106	100	94	90		
9.0	229	200	178	160	145	133	123	114	107	100	94	89	84	80		

* Thickness capacity above shown is for Model CDSF 6-800 with 3 rows of backup top and bottom for Straightener along with 22 Kw of Servo Feed Motor.

FEED PERFORMANCE

Note: Calculated figures without slowing down of pressing.

SPM	Feed Length(mm)														
	30	50	80	100	120	150	180	200	250	300	350	400	450	500	
Feed Time(sec)	0.267	0.321	0.385	0.421	0.454	0.498	0.542	0.571	0.644	0.717	0.789	0.862	0.935	1.008	
Feed Angle	132°	70.0	68.5	57.1	52.2	48.5	44.1	40.6	38.5	34.2	30.7	27.9	25.5	23.5	21.8
	180°	70.0	70.0	70.0	70.0	66.1	60.2	55.3	52.5	46.6	41.9	38.0	34.8	32.1	29.8
	192°	70.0	70.0	70.0	70.0	70.0	64.2	59.0	56.0	49.7	44.7	40.5	37.1	34.2	31.8
	237°	70.0	70.0	70.0	70.0	70.0	70.0	70.0	69.2	61.3	55.1	50.0	45.8	42.2	39.2
	240°	70.0	70.0	70.0	70.0	70.0	70.0	70.0	70.0	62.1	55.8	50.7	46.4	42.8	39.7
	270°	70.0	70.0	70.0	70.0	70.0	70.0	70.0	70.0	69.9	62.8	57.0	52.2	48.1	44.0

Technical specifications are indicative and subject to change to suit end application.



TAMCO ENGINEERING PVT. LTD.

Office : Flat No. 303, Tower D, Ashford Royale, Goregaon-Mulund Link Road, Nahur (W). Mumbai - 400 078, India.

Factory : Plot No. B-29, Murbad Industrial Area, Murbad MIDC, Dist. Thane - 421401, Maharashtra, India. **Mob** - 9322951554 / 9819812717 / 9324044004

Email - info@pressroomautomation.net, parinkhona@gmail.com